

# Build. Train. Optimize. **AI for the edge.**

Build datasets, train models, and optimize libraries to run on any edge hardware, from extremely low-power MCUs to efficient Linux CPU targets and GPUs. Edge Impulse empowers ML teams to run AI at peak performance on any edge device, with unmatched ease and speed.

## Any data, any device

Edge Impulse developers can get data from various sources, including their own sensor hardware, public datasets, and data generated through simulations or synthetic data generation.

- Unlock sensor data value
- Advance algorithm development
- Optimize edge AI models
- Target agnostic edge deployment



## Easily integrate with existing ML workflows

Collaborate across your data, ML, and embedded teams to build optimized production-ready models faster.

## Achieve measurable results

Future-proof your products. Our customers win by adding edge intelligence to their products, from low-power wearables to industrial gateways.

## Build with the world's top hardware, sensors, and cloud platforms

Benefit from built-in integrations with our leading partner ecosystem including MCUs to MPUs and GPUs, sensors, cloud services, data science tools, and digital twin platforms.

## Meet Our Partners



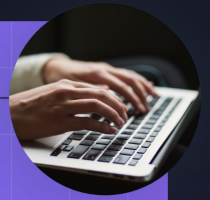
Explore our full ecosystem at [edgeimpulse.com/ecosystem-partners](https://edgeimpulse.com/ecosystem-partners)

# Get started with Edge Impulse today



Schedule a demo

Integrate with your workflow



Unlock sensor data value



Optimize AI for any hardware



## Convert Python Models into Optimized C++

- Profile on-device performance of any trained model
- Analyze the impact of architectural decisions
- Generate optimized C++ libraries
- Deploy to any edge device

## We Play Fair

- Royalty-free business model — no impact on BOM cost
- Your IP, stays your IP
- Total explainability, no black boxes

