



EDGE IMPULSE

Escape the Edge MLOps Maze

Your path to faster, easier deployment

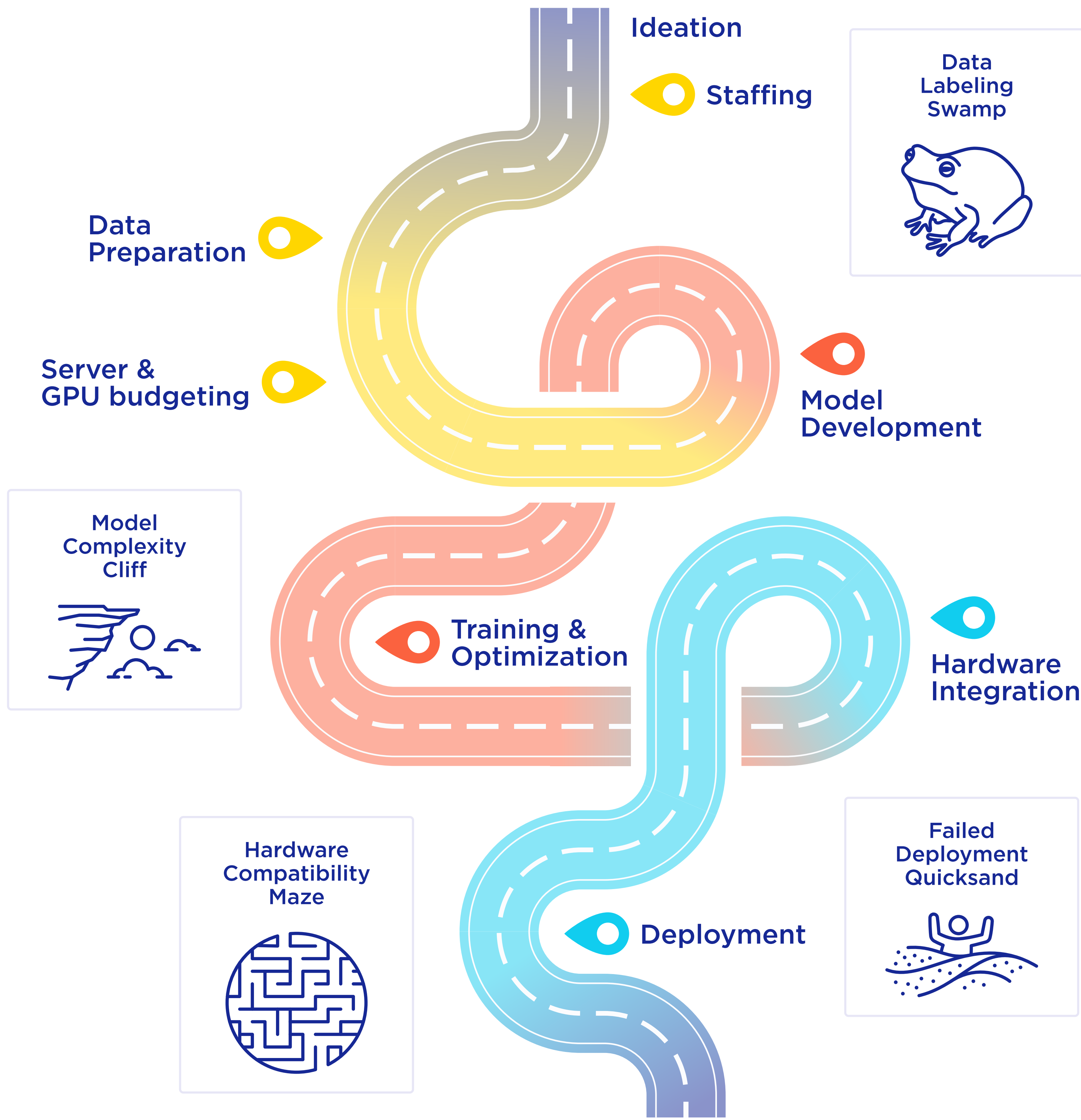
In the race to deploy AI, your ML models are only as valuable as their path to production. According to McKinsey & Company, only 15% of ML projects succeed¹, trapped in a maze of complex challenges. Choose the easier Edge MLOps path with Edge Impulse.

Traditional Edge MLOps

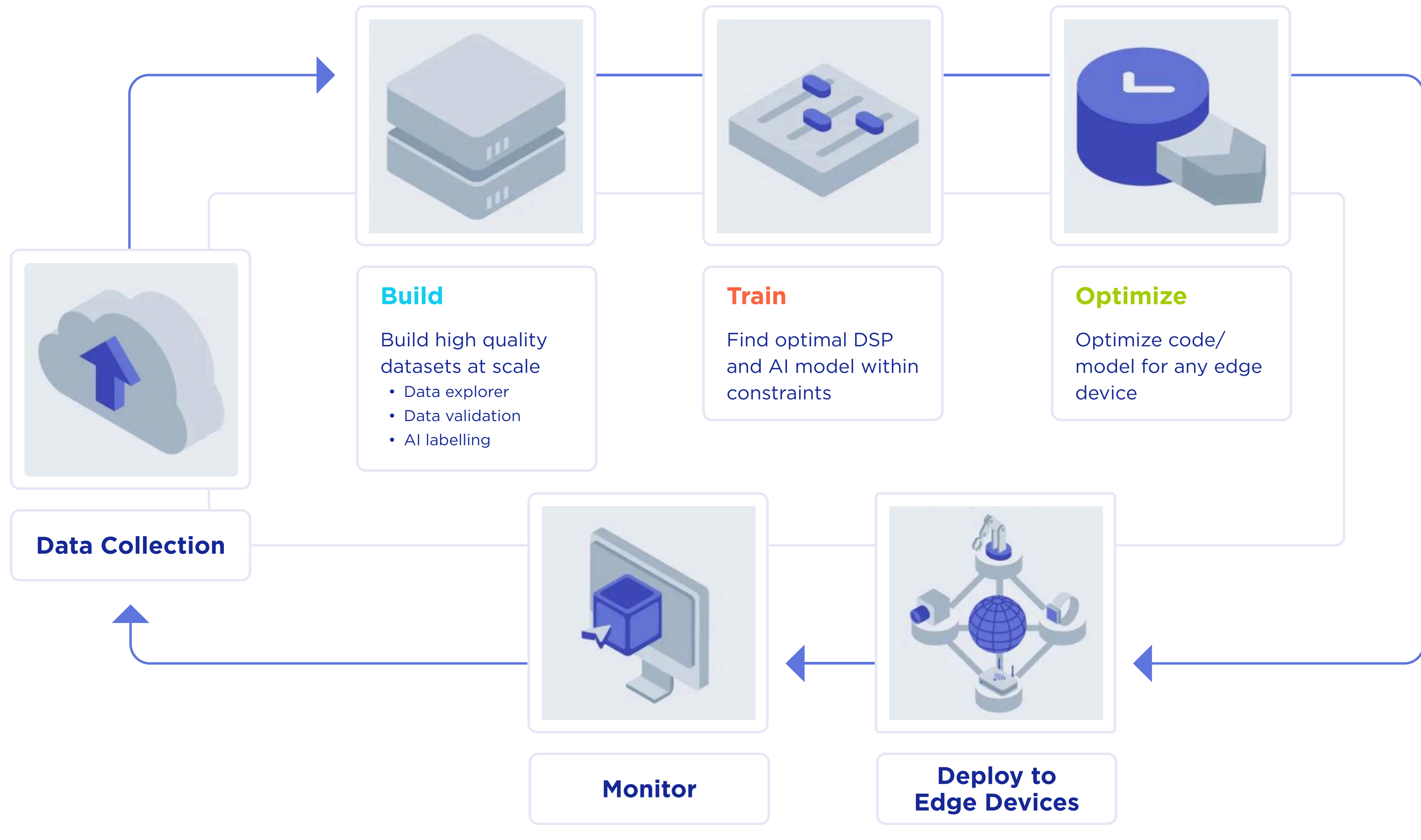
Today's edge AI deployments can stretch a project from months to years. Teams wrestle with a number of bottlenecks including:

- Painstaking data preparation
- Endless labeling cycles
- Complex model optimization for resource-constrained edge devices

Projects that should take weeks end up consuming years of engineering effort, while cost and time-to-market extend far beyond original targets.



Choose the easier path with Edge Impulse Edge MLOps



Data Preparation Made Painless

- Collect sensor, audio, or image data, directly from devices, files or cloud integrations to build high-quality datasets.
- Validate your data in minutes and create high-quality datasets using the power of multi-modal LLMs.
- Analyze your datasets with advanced data science tools to analyze data quality and identify areas for improvement.
- Not enough data? Synthetic data generation is available inside the Edge Impulse platform, enabling a new and efficient way to work with LLM-generated images, audio, and voice to enhance your edge AI models.

No More Labeling Grind

- Edge Impulse's new AI labeling functionality steps in as a powerful tool to save time by automating a substantial portion of the labeling work.

Stress-free Model Optimization

- Improve on-device performance by finding the perfect balance and trade-offs between feature extraction algorithms and model architectures, all budgeted against memory and latency constraints.
- Test and fine-tune your on-device model performance, and get an immediate understanding of how your model will perform in the field.

Cut through the MLOps complexity and accelerate your Edge ML project with confidence.

GET STARTED



Edge Impulse is the leading platform for building, deploying, and scaling edge machine learning models. [Visit our website](#) to learn more.

¹Forbes, Why Most Machine Learning Applications Fail to Deploy